



Using The Anglers Database for Sea Angling

www.AnglersDatabase.com

E-mail:
Enquiries@AnglersDatabase.com

The Anglers Database has been developed with the UK Coarse Angler in mind. It takes an Image based approach to keeping records of their angling sessions.

The system can be used by the Sea Angler though some of the terminology will be different from sea fishing terms. However, it is only the terms that are different, the system itself is suitable for recording Sea Angling records.

The system allows the angler to record captures of individual (named) fish. This suits the Carp Angler, for example. It also allows a record to be kept of the Catch a person might make. The catch is a record of the type of fish caught, their number and weight, as apposed to the capture of one individual fish.

Though the system comes pre-populated with a list of coarse fish types it is easy to replace these with sea fish. In addition to recording the sea fish you have caught you can record the method used to catch them and the features of the bottom at that point (rock, sand or reef say).

Map of Shoreline

For the coarse angler there is the Fishing Mark and Swim. These are analogous with the Spot being fished (Swim) and the exact place you cast or dropped your bait or lure (Fishing Mark). If you were fishing from the rocks or beach then the spot you fished from would be the Swim and the place the rig was cast (say) would be the Fishing Mark. In the case of boat fishing the wreck (say) would be the Swim and the drift would be the Fishing Mark. Information about the Swim and Fishing Mark would include the depth and the bottom features. It is possible to set up your own features and methods used so you can replace the defaults in the system for the coarse angler.

The Session record in the system would be the equivalent of the trip record. It notes the date and times of the trip and also records the barometric pressure, water temperature, weather and light conditions, among others. All of this information is optional and does not need to be completed. There is a 'comments' field in the Session record in which tide information can be typed in free form text.

The Water information would be the equivalent of the harbour or stretch of coast or area of sea being fished and to which Swim (spot) records are linked.



Using The Anglers Database for Sea Angling

Lastly there is the Image. Each Water has a Main Image to which other Images can be linked. On any of these Images you can place Swim Icons and Fishing Mark Icons. Then, using these Icons, you can add, amend or delete Session and Catch details.

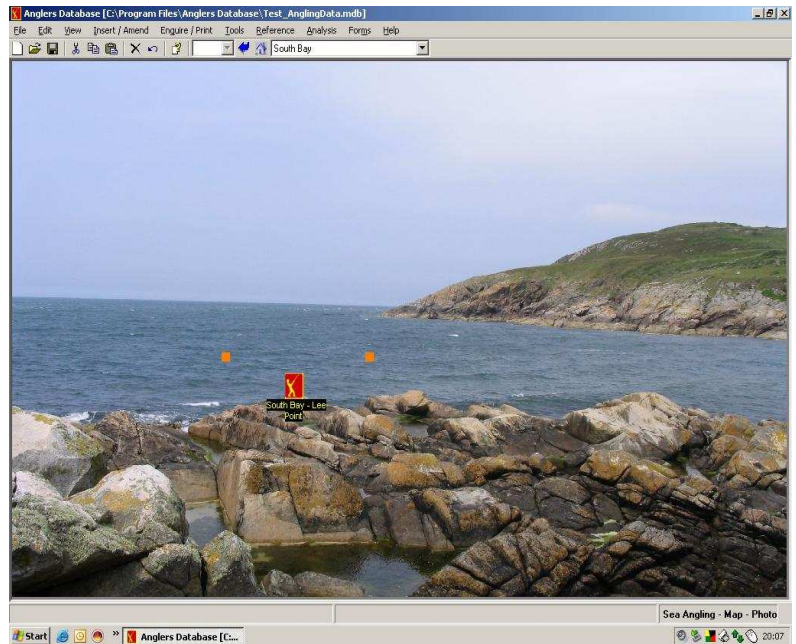
One way the Image can be used is to scan a section of coast line as the Main Image on which you can place Swim (spot) Icons or you can link to it a digital photo of the spot and then mark on this linked image the Swim and Fishing Mark icons. See the screen shot to the right. If you are using a boat then an admiralty chart of a large area can be scanned and then if you wish, more detailed scans of the area can be linked, in which say two, three or more features (wrecks, shallows or reefs) exist. Each feature could be a spot you have fished and where the Swim icon would be positioned. Also, for the boat angler it would be possible to record the GPS position and any way-points in the 'comments' field in the Swim record.

A couple of tips when scanning maps/charts. Scan them with an aspect ratio or size of 67% with a resolution of at least 200dpi. You can also use photo editing software to add your own comments or features on the maps before using them in the system.

We would recommend that the sea fisherman take the trial version and try the above before purchasing the system.

If you want help or further advise on this topic then EMail us at 'Enquiries@AnglersDatabase.com' with your questions.

Screen Shot of a Fishing Spot and Marks in The Anglers Database



Sea Chart showing a Link to an Image

